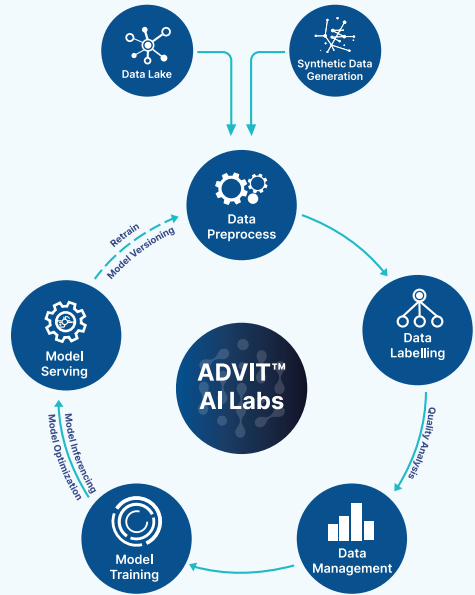


ADVIT™ AI Labs

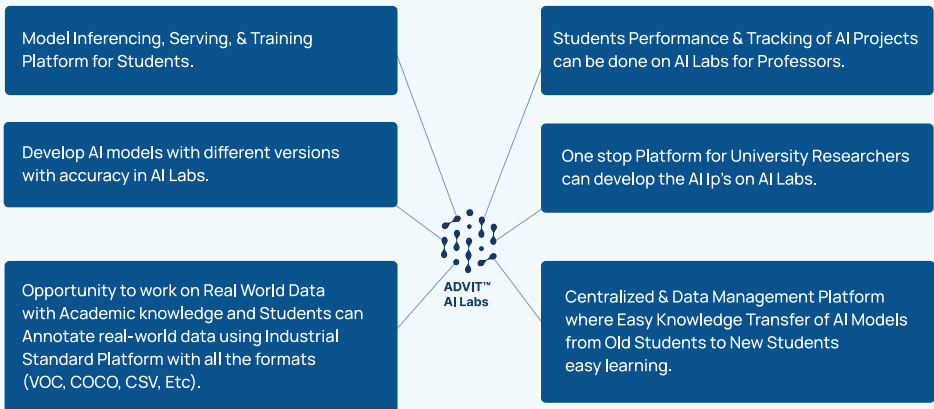
ADVIT AI Labs is a turnkey, state-of-the-art, and modular learning platform designed to enable Universities, students and researchers to develop and deploy real-world projects in AI.

It is a fully-integrated AI Lab with the highest level of service quality including complete installation, professional development, and direct access to support and online resources to ensure your research project success.

ADVIT™ AI labs includes Machine Learning & Deep Learning methodologies Embedded Edge AI deployment on Real-world industry AI projects & datasets, to develop state-of-the-art AI Research & Applications.



Features of ADVIT™ AI Labs



Benefits of Associating with ADVIT AI Labs



Certifications



Digital Library



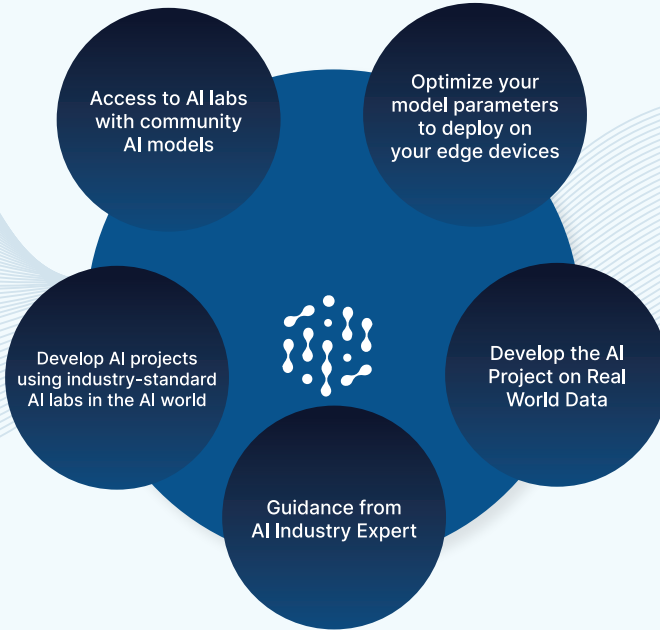
Webinar Updates



AI Knowledge HUB



Research Collaboration



Technical Key Features

- **Data Pre-Processing**
- **SDK for Data Labeling**
 - Hierarchical Attribute Tagging
 - Automated Labeling using deep learning model integration
 - Provide expert data annotators
- **The self-hosted platform for AI application development for students, Researchers & Faculties.**
- **Alops / MLOps / DLOps**
- **Explainable AI**
- **Embedded AI & Edge Computing Labs**
- **AI model Training platform**
 - Tensorflow, PyTorch, Caffe2, etc. frameworks supported.
- **Access to Industry-led AI Research projects in**
 - Machine Learning
 - Supervised Learning
 - Unsupervised Learning - Deep Learning
 - Deep Learning
 - + Computer Vision
 - Object Detection
 - Segmentation
 - Classification
 - + NLP
- **AI model Inference**
- **AI model serving**

Connect with Us!

sales@automatonai.com

www.automatonai.com

+91 9172 005 535

